



Our Mission at SUPERIOR TECHNO CAST is to be in the Indian business to manufacture and deliver “**SUPERIOR**” quality castings and engineering solutions to our valued customers and to give fair and ethical contribution to our Nation's industrial growth.

Foundry Division

- Aluminium Pressure die casting Machine
- Electric melting furnace come holding furnaces
- Automatic trimming power press
- Horizontal belter machine
- Vertical belter machine
- Buffing machine
- Lathe Machine



Total we have 3 pressure die casting machine.



Production capacity of 450MT per annum.

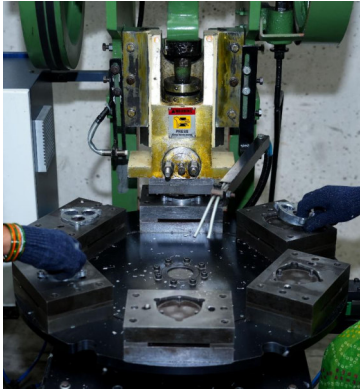


Aluminium pressure die casting for piece weight of 2 gram to up to 2 kgs.



3 Electrical melting come holding furnaces with capacity of 150kgs each.





FOUNDRY DIVISION - TRIMMING & FETTLING

- For aluminum pressure die-cast components, our automated power press ensures precise trimming, dimensional accuracy, and uniform quality — maintaining excellence in every production cycle.

Machining Division

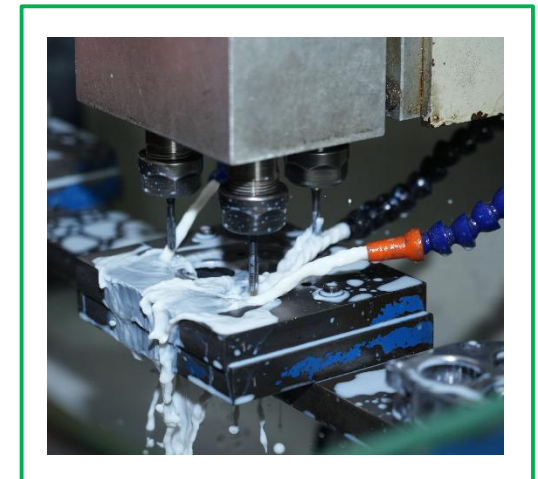
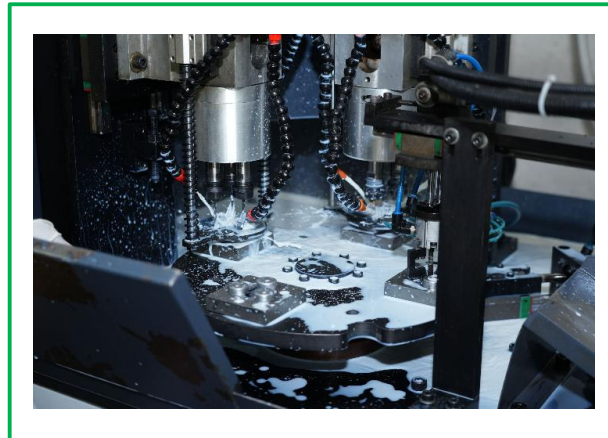
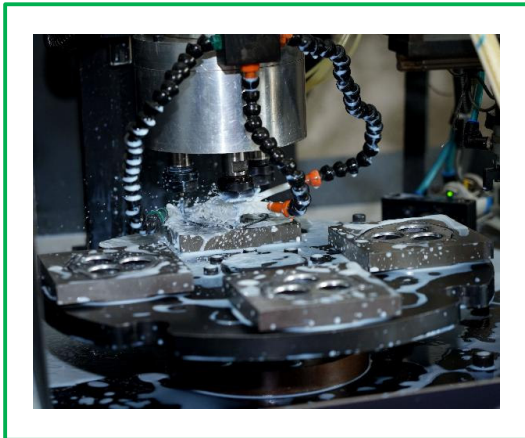
- Turning 2 Head SPM machine
- CNC machine with fully quality controlled gauges
- Fully Automatic SPM drilling & tapping machine with fully quality controlled gauges
- Conventional drilling up to Ø16mm
- Conventional tapping up to Ø12mm
- Conventional lathe machine
- Vibro finishing machines for the casting shining and deburring
- Centrifugal Dryers

- For selected components, we deploy a dedicated Special Purpose Machine (SPM) engineered for precision, consistency, and scalability — ensuring superior performance and efficiency in mass production.



SUPERIOR
TECHNOCAST **Machining Division - Drilling & Tapping SPM Machine**

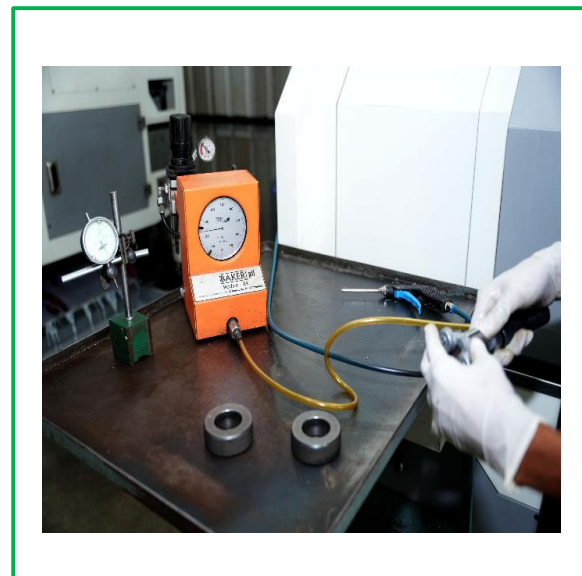
- For hole drilling and threading operations, we employ an advanced automatic SPM (Special Purpose Machine) designed to deliver exceptional precision, consistent performance, and high scalability for mass production.



- We use an advanced vibro finishing process to remove burrs, sharp edges, and surface irregularities from castings. This process ensures uniform surface texture, improved appearance and better dimensional consistency before final inspection.



- At Superior Technocast, quality is not a checkpoint — it's a culture. Our commitment is validated by ISO 9001:2015 certification, ensuring every product meets the highest global standards.
- Our commitment is to produce reliable, high-performance products through strict quality controls, advanced technology and a culture of continual improvement.



Certified ISO 9001:2015

Air Gauge

Visual Inspection

Our Product Range

- Part Size = Ø135X71mm
175x85x45mm
- Part Weight = 0.082-0.480 Kg
- Grade = ADC12(LM2) or LM24



- Part Size = 130-199x72-95x
51-90mm
- Part Weight = 0.119-0.380 Kg
- Grade = ADC12(LM2) or LM24



- Part Size = 80-85x55x
32-44mm
- Part Weight = 0.050-0.130 Kg
- Grade = LM2 or LM24

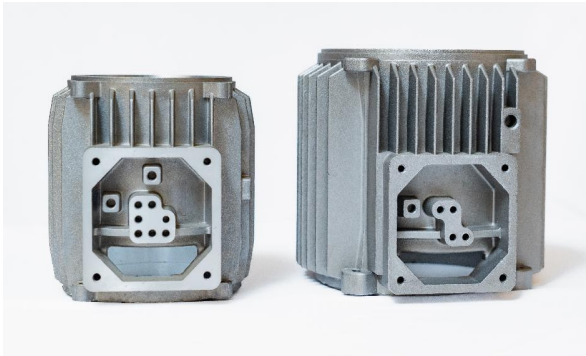


Electrical Sector Solutions - Motor Body & Endshild

- Part Size=Ø152x150mm
Ø138x125mm
- Part Weight = 0.800-1.200 Kg
- Grade = LM2

- Part Size = Ø125-138x26-34mm
- Part Weight = 0.250-0.370 Kg
- Grade = LM2

- Part Size = 156x156x63-18mm
- Part Weight = 0.300-1.00 Kg
- Grade = LM2



Electrical Sector Solutions – Endcap (Endshild)

- Part Size = Ø175x102mm
- Part Weight = 1.65 Kg
- Grade = ADC12

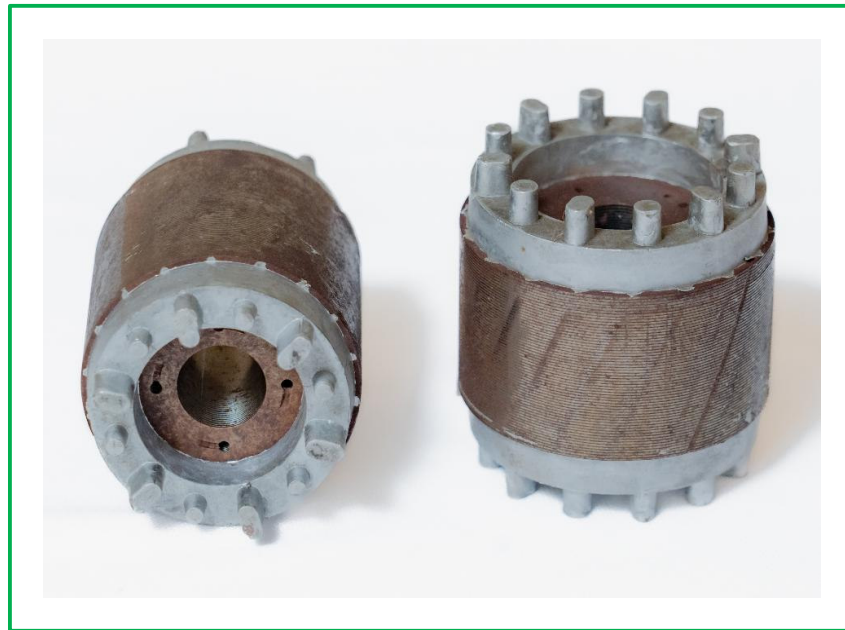
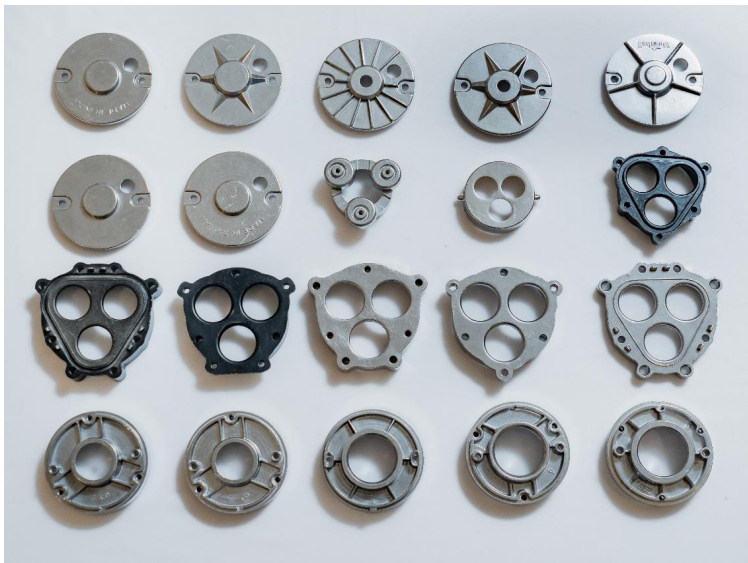


- Part Size = Ø174x31mm
- Part Weight = 0.500–0.850 Kg
- Grade = ADC12



- Part Size = $\text{Ø}76 \times 32$ mm
- Part Weight = 0.040-0.100 Kg
- Grade = LM2

- Part Size = $\text{Ø}47\text{-}54 \times 30\text{-}60$ mm
- Part Weight = 0.070-0.115 Kg
- Grade = IE07



Electrical Sector Solutions – LED Light Parts

- Part Size = $\text{Ø}40\text{-}155 \times 18\text{-}95\text{mm}$
- Part Weight = 0.030-0.375 Kg
- Grade = LM2

- Part Size = $\text{Ø}60\text{-}160 \times 75\text{-}95\text{mm}$
- Part Weight = 0.190-0.490 Kg
- Grade = LM2

- Part Size = $\text{Ø}60\text{-}100 \times 55\text{-}95\text{mm}$
- Part Weight = 0.170-0.375 Kg
- Grade = LM2

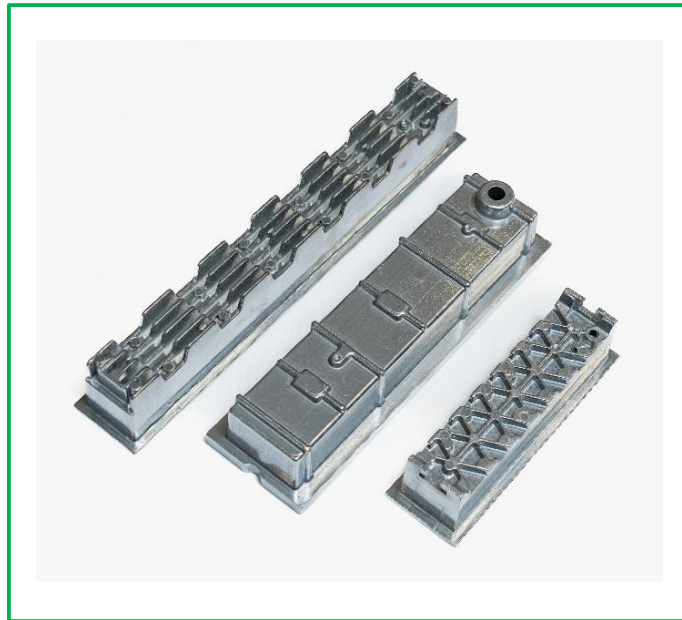


Electrical Sector Solutions – LED Light Parts

- Part Size = 200x125x58m
Ø125x38mm
- Part Weight = 0.10-0.36Kg
- Grade = LM2



- Part Size = 280x43x40mm
- Part Weight = 0.250Kg
- Grade = LM2



- Part Size = 175x155x55mm
- Part Weight = 0.150 - 0.330 Kg
- Grade = LM2

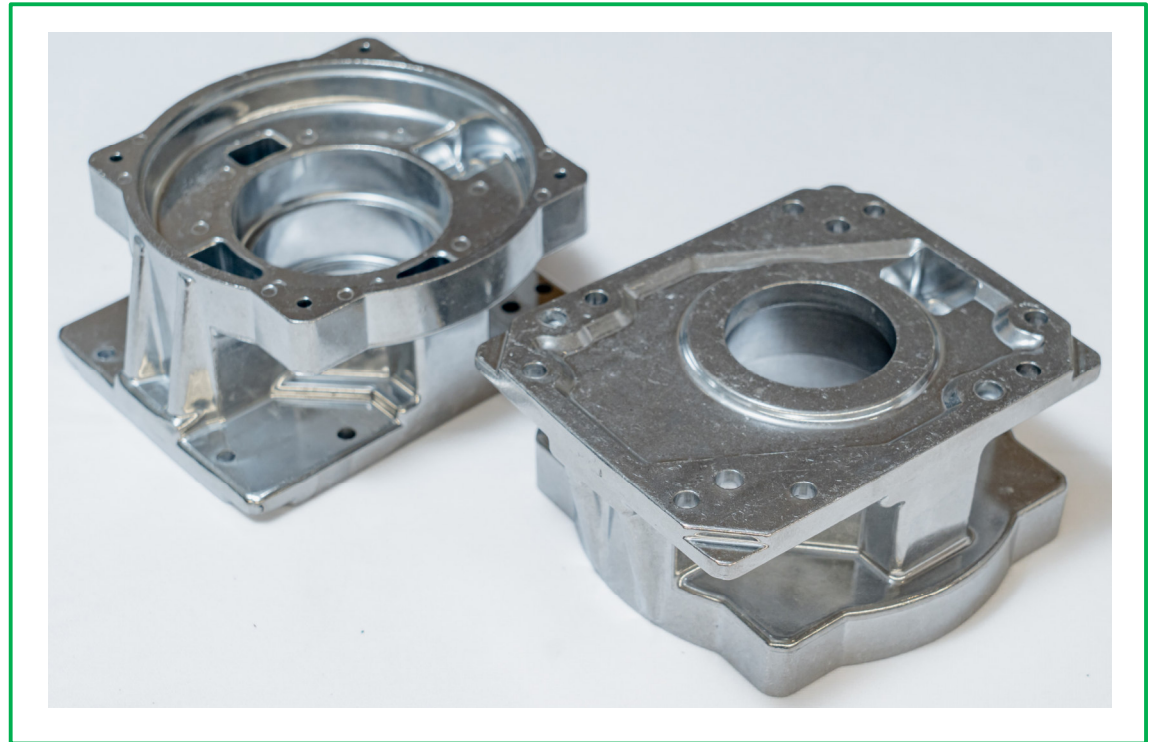


Transmission & Gear Housing Solutions

- Part Size = 90x90x90mm
- Part Weight = 0.300 Kg
- Grade = LM25



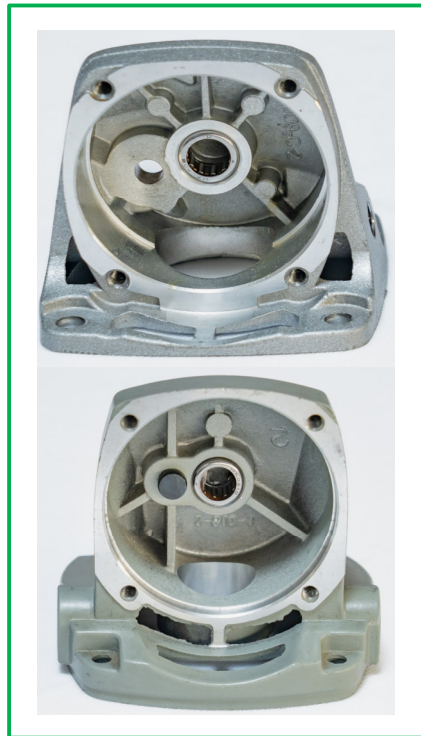
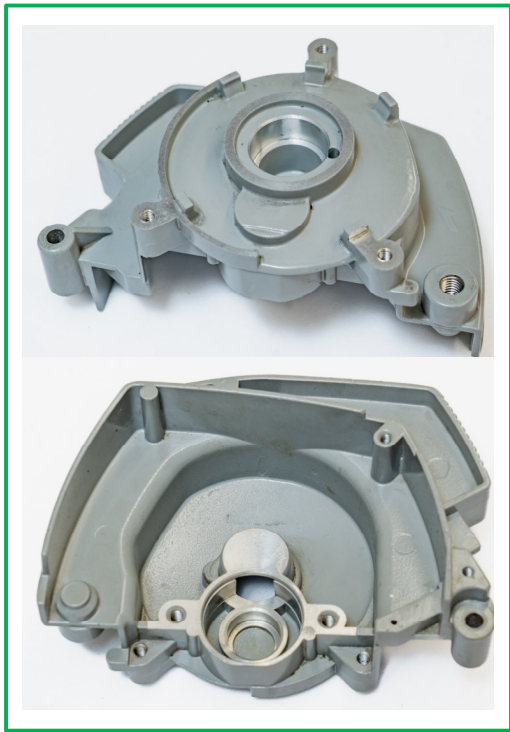
- Part Size = 160x113x138mm
- Part Weight = 1.20 Kg
- Grade = ADC12 or LM2



- Part Size = 152x109x64mm
- Part Weight = 0.900 Kg
- Grade = LM2

- Part Size = 76x76x73mm
- Part Weight = 0.450 Kg
- Grade = LM2

- Part Size = 60-67x38-60x20-22mm
- Part Weight = 0.060-0.100 Kg
- Grade = LM2



- Part Size = 45x30x37mm
50x30x46mm
- Part Weight = 0.038-0.085Kg
- Grade = LM2



- Part Size = 50x37x46mm
50x35x42mm
- Part Weight = 0.030-0.070Kg
- Grade = LM2



- Part Size = 50x35x42mm
- Part Weight = 0.034-0.075 Kg
- Grade = LM2

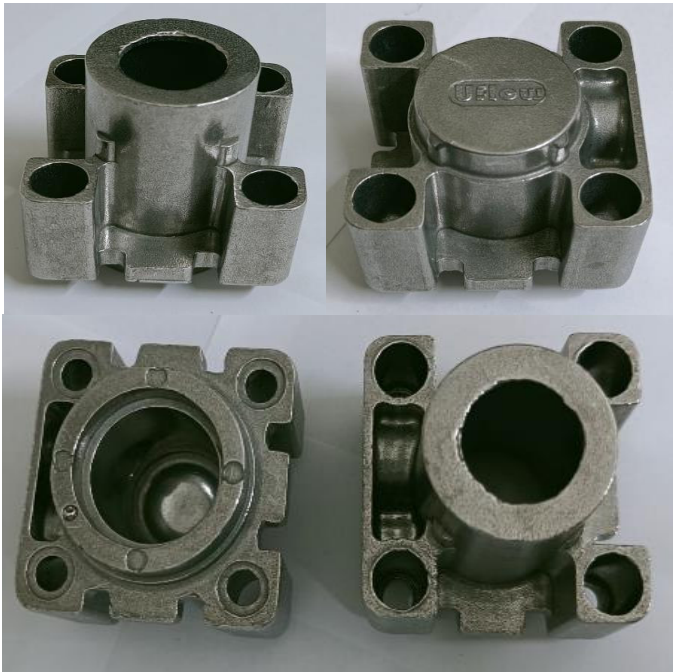


Hydraulic Solutions - Solenoid Valve Parts & Valve Parts

- Part Size = 55x55X50-60mm
- Part Weight = 0.060-0.070Kg
- Grade = LM6

- Part Size = 60x60X55mm
- Part Weight = 0.070-250Kg
- Grade = LM2

- Part Size = 55-150x55-120X45-60mm
- Part Weight = 0.070-0.270 Kg
- Grade = LM2

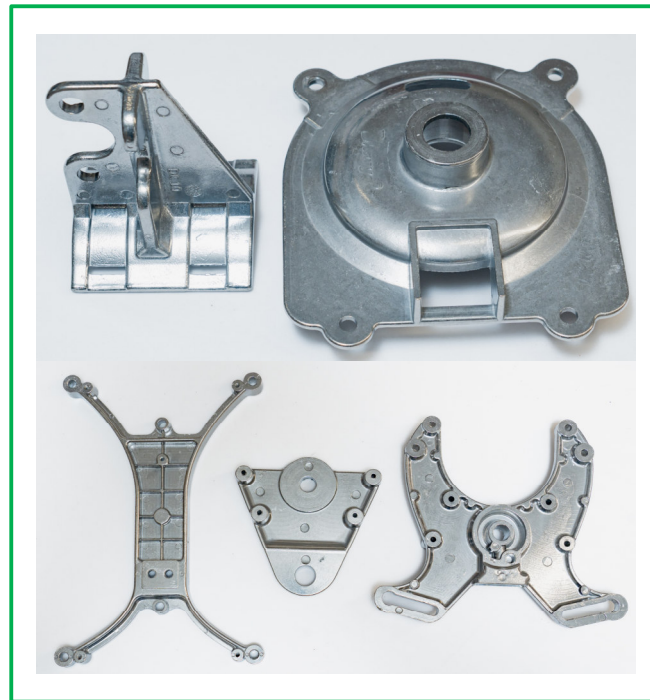


General Engineering – Pulley & Machinery Parts

- Part Size = Ø63-230x34-70mm
- Part Weight = 0.130-1.90 Kg
- Grade = LM2



- Part Size = 113-220x118-287x
25-176mm
- Part Weight = 0.290-0.720Kg
- Grade = LM2



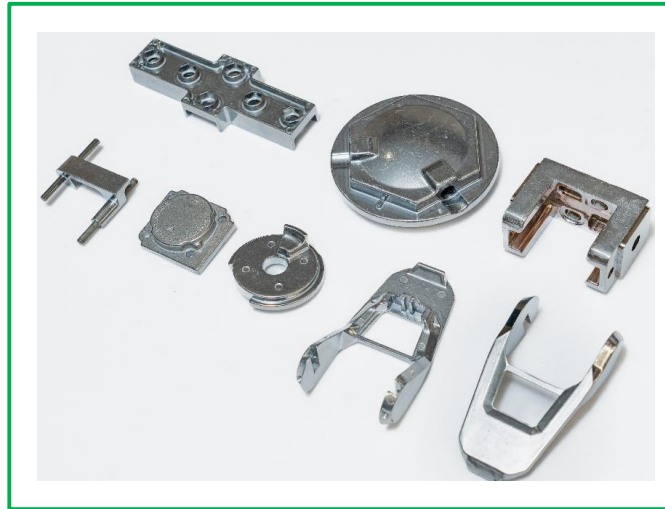
- Part Size = 86-110x86-110x54mm
- Ø170x31mm
- Part Weight = 0.190-0.370Kg
- Grade = ADC12 or LM2



- Part Size = 24-180x28-124x
- 15-37mm
- Part Weight = 0.045 - 0.125 Kg
- Grade = LM2

- Part Size = Ø78-230x38-143mm
- 132x178x45mm
- Part Weight = 0.270-1.05 Kg
- Grade = LM2

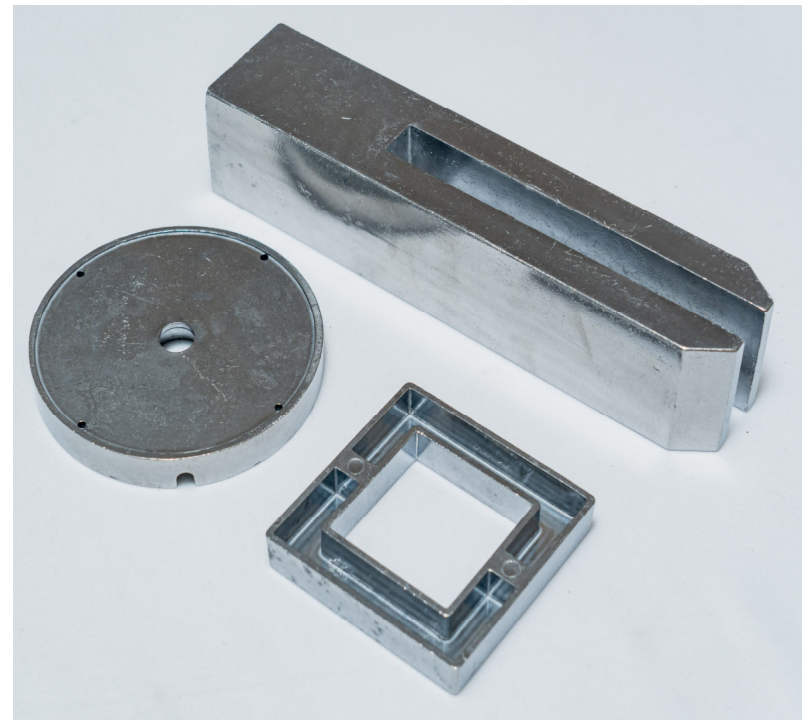
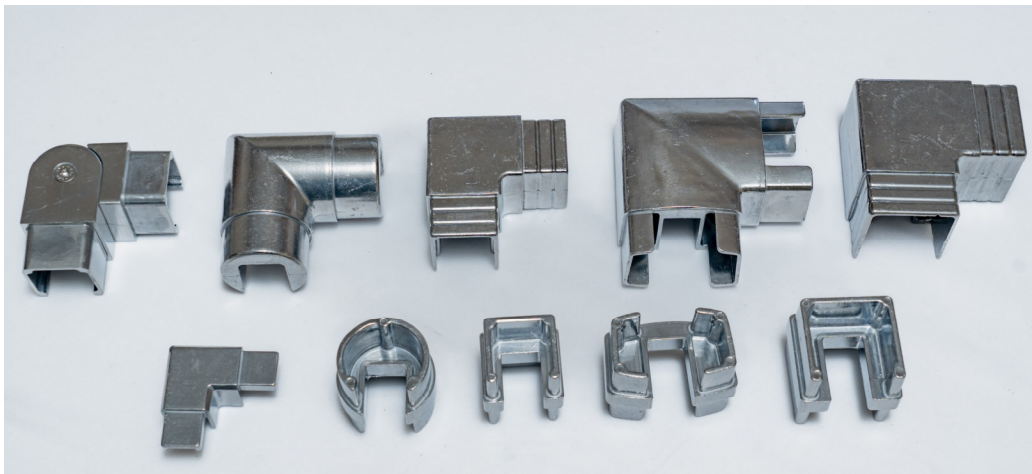
- Part Size = Ø78-230x38-143mm
- 132x178x45mm
- Part Weight = 0.270-1.05 Kg
- Grade = LM2



General Engineering - Railing Parts

- Part Size = 52-88x52-88x52-55mm
- Part Weight = 0.200 - 0.470 Kg
- Grade = LM2

- Part Size = 52-88x52-88x52-155mm
- Part Weight = 0.075-1.270Kg
- Grade = LM2





Plot No. 10,11,12, Shashwat Industrial Area,
Near Dhvani Industrial Park, Behind Apollo
Technoforge, SIDC Main Road, Shapar-(Veraval),
Rajkot-360024



+91-9879300052
+91-7874056222



info@superiortechnocast.com



<https://superiortechnocast.com/>



YouTube

Corporate Video



Thank you...